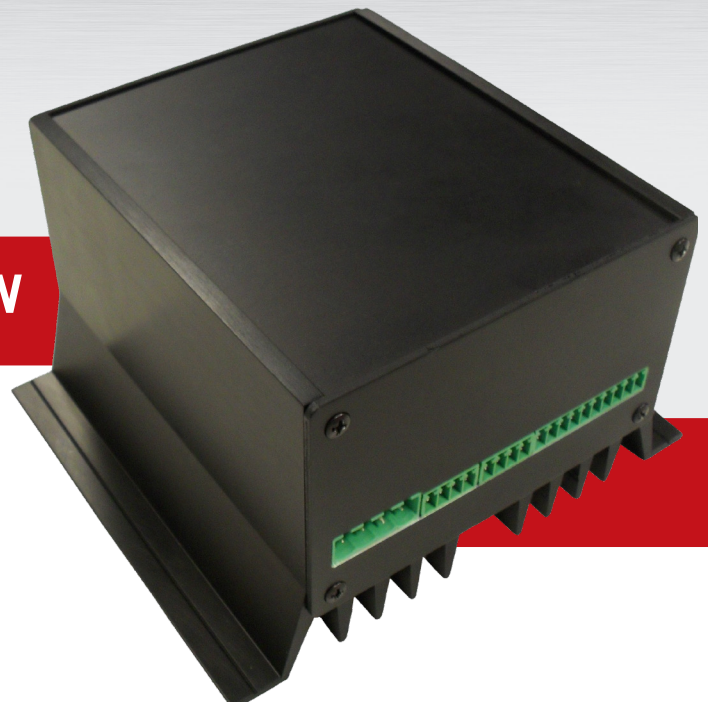




## piCAN-Charger-500W



### Features

- EnergyBus Charger
- applicable for lithium-ion or lead-acid batteries
- fanless and compact
- intelligent charging
- high level of charge security
- Charging power: max. 500W
- Charge Voltage: 18V-58,8V
- Charge Current: max. 10A (adjustable)
- switchable 12V Aux-Output
- External Bus: CAN / LIN / I2C
- Internal Bus: CAN
- electronic door-opener support
- Bus-capable thanks to CAN-Bus



### Overview

The piCAN-Charger-60V is an intelligent EnergyBus industrial charger for lithium-ion and lead-acid batteries, with a charge voltage between 18 and 58,8 volts and a maximum charge current of 10 amps (adjustable) in a compact, fanless enclosure.

Due to the independent communication with the device to be charged – either via EnergyBus (CAN), LIN or I<sup>2</sup>C – the optimum charging voltage and the optimum charge current are determined and provided. The compatibility with various bus systems guarantees the possibility of connecting the charger to a variety of bikes from different manufacturers.

Redundant monitoring of charging parameters ensures a high level of a charge security. The switchable 12V Aux-Output with the voltage sensing enables the activation of deeply discharged batteries and passive EnergyBus-devices.

The compact, fanless design enables the use of the charger in a rough environment.

An internal CAN-Bus-System allows the control of several piCAN-Chargers-60V by a host computer (e.g. piA-AM3505), supports an efficient power and door management, and permits determining and transmitting the charger's parameters via internet.

#### Applications:

- EnergyBus e-bikes and pedelecs
- EnergyBus public pedelecs and e-bikes rental systems
- EnergyBus battery systems

## Details

### piCAN-Charger-60V

Charging Power	max. 500W
Charge Voltage	18-58,8V
Charge Current	0-10A (adjustable)
Input Voltage Range	36-59V DC
Charge Method	CCCV, Trickle Charge
Application/Battery Type	Lithium-ion or lead-acid battery
Interfaces	Power in/out EnergyBus incl. 12V Aux-Output CAN-/ LIN-/ I <sup>2</sup> C-Bus 1x Electric door opener with Monitoring Contact 1x 12V-LED 1x Push-button
Indicators	multicolor LED piezo buzzer
Serviceinterface	Optional USB
Enclosure	Aluminium, black 124mm x 143mm x 80mm
Net Weight	920g